

PARKSIDE SUBDIVISION VICINITY MAP

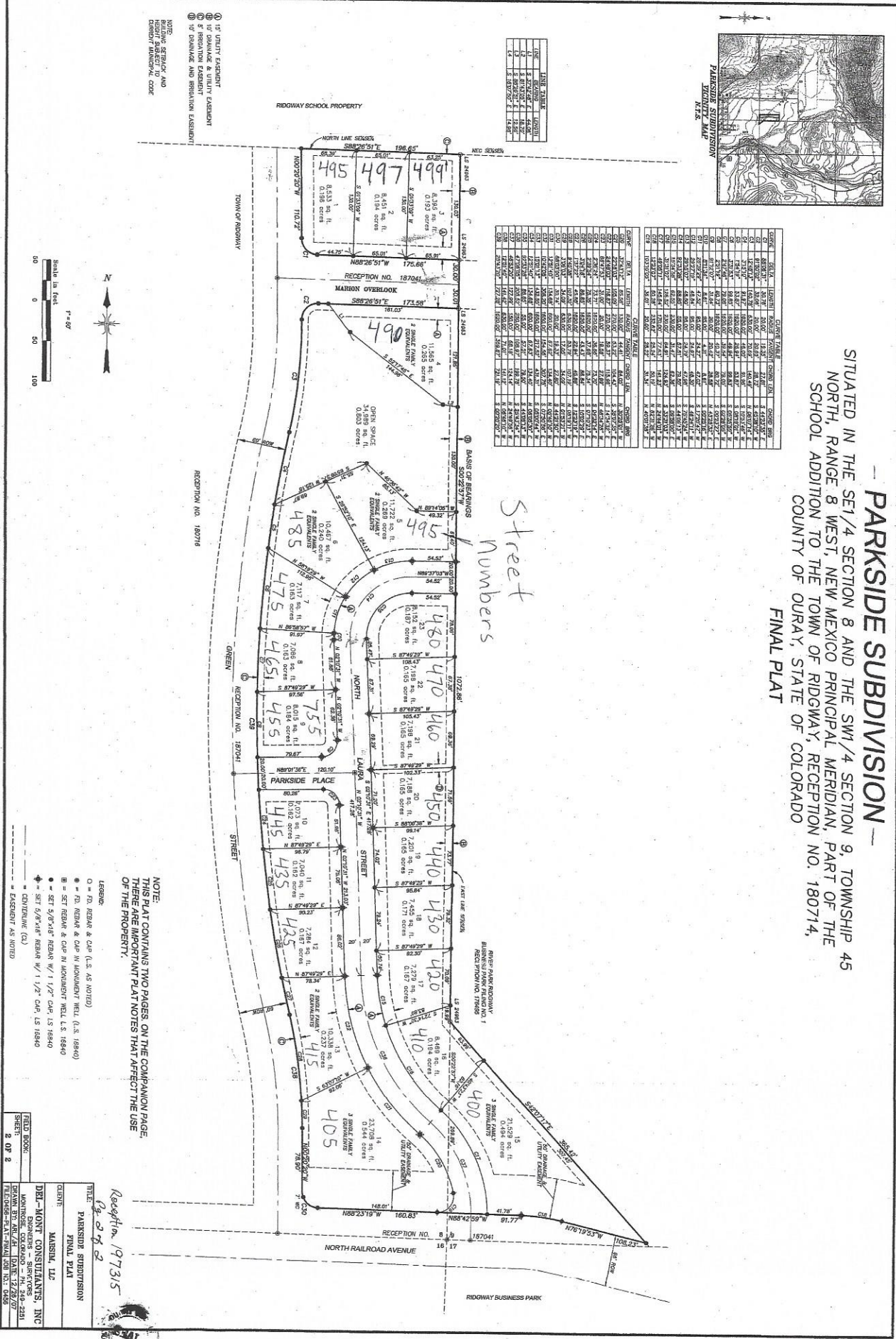
- PARKSIDE SUBDIVISION -

SITUATED IN THE SE 1/4 SECTION 8 AND THE SW 1/4 SECTION 9, TOWNSHIP 45 NORTH, RANGE 8 WEST, NEW MEXICO PRINCIPAL MERIDIAN, PART OF THE SCHOOL ADDITION TO THE TOWN OF RIDGWAY, RECEPTION NO. 180714, COUNTY OF URAY, STATE OF COLORADO

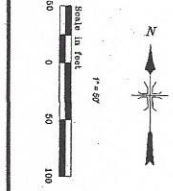
FINAL PLAT

CONVEYOR	SECTION	ACREAGE	REMARKS	RECEIPTS	RECORD NO.	DATE
C-1	8	1.3428	1/4 SECTION 8		180714	1/15/07
C-2	9	1.3428	1/4 SECTION 9		180714	1/15/07
C-3	8	1.3428	1/4 SECTION 8		180714	1/15/07
C-4	9	1.3428	1/4 SECTION 9		180714	1/15/07
C-5	8	1.3428	1/4 SECTION 8		180714	1/15/07
C-6	9	1.3428	1/4 SECTION 9		180714	1/15/07
C-7	8	1.3428	1/4 SECTION 8		180714	1/15/07
C-8	9	1.3428	1/4 SECTION 9		180714	1/15/07
C-9	8	1.3428	1/4 SECTION 8		180714	1/15/07
C-10	9	1.3428	1/4 SECTION 9		180714	1/15/07
C-11	8	1.3428	1/4 SECTION 8		180714	1/15/07
C-12	9	1.3428	1/4 SECTION 9		180714	1/15/07
C-13	8	1.3428	1/4 SECTION 8		180714	1/15/07
C-14	9	1.3428	1/4 SECTION 9		180714	1/15/07
C-15	8	1.3428	1/4 SECTION 8		180714	1/15/07
C-16	9	1.3428	1/4 SECTION 9		180714	1/15/07
C-17	8	1.3428	1/4 SECTION 8		180714	1/15/07
C-18	9	1.3428	1/4 SECTION 9		180714	1/15/07
C-19	8	1.3428	1/4 SECTION 8		180714	1/15/07
C-20	9	1.3428	1/4 SECTION 9		180714	1/15/07
C-21	8	1.3428	1/4 SECTION 8		180714	1/15/07
C-22	9	1.3428	1/4 SECTION 9		180714	1/15/07
C-23	8	1.3428	1/4 SECTION 8		180714	1/15/07
C-24	9	1.3428	1/4 SECTION 9		180714	1/15/07
C-25	8	1.3428	1/4 SECTION 8		180714	1/15/07
C-26	9	1.3428	1/4 SECTION 9		180714	1/15/07
C-27	8	1.3428	1/4 SECTION 8		180714	1/15/07
C-28	9	1.3428	1/4 SECTION 9		180714	1/15/07
C-29	8	1.3428	1/4 SECTION 8		180714	1/15/07
C-30	9	1.3428	1/4 SECTION 9		180714	1/15/07

Street Numbers



- ① IS DUTY EXEMPT
- ② IS DUTY EXEMPT
- ③ IS DUTY EXEMPT
- ④ IS DUTY EXEMPT
- ⑤ IS DUTY EXEMPT
- ⑥ IS DUTY EXEMPT
- ⑦ IS DUTY EXEMPT
- ⑧ IS DUTY EXEMPT
- ⑨ IS DUTY EXEMPT
- ⑩ IS DUTY EXEMPT
- ⑪ IS DUTY EXEMPT
- ⑫ IS DUTY EXEMPT
- ⑬ IS DUTY EXEMPT
- ⑭ IS DUTY EXEMPT
- ⑮ IS DUTY EXEMPT
- ⑯ IS DUTY EXEMPT
- ⑰ IS DUTY EXEMPT
- ⑱ IS DUTY EXEMPT
- ⑲ IS DUTY EXEMPT
- ⑳ IS DUTY EXEMPT
- ㉑ IS DUTY EXEMPT
- ㉒ IS DUTY EXEMPT
- ㉓ IS DUTY EXEMPT
- ㉔ IS DUTY EXEMPT
- ㉕ IS DUTY EXEMPT
- ㉖ IS DUTY EXEMPT
- ㉗ IS DUTY EXEMPT
- ㉘ IS DUTY EXEMPT
- ㉙ IS DUTY EXEMPT
- ㉚ IS DUTY EXEMPT
- ㉛ IS DUTY EXEMPT
- ㉜ IS DUTY EXEMPT
- ㉝ IS DUTY EXEMPT
- ㉞ IS DUTY EXEMPT
- ㉟ IS DUTY EXEMPT
- ㊱ IS DUTY EXEMPT
- ㊲ IS DUTY EXEMPT
- ㊳ IS DUTY EXEMPT
- ㊴ IS DUTY EXEMPT
- ㊵ IS DUTY EXEMPT
- ㊶ IS DUTY EXEMPT
- ㊷ IS DUTY EXEMPT
- ㊸ IS DUTY EXEMPT
- ㊹ IS DUTY EXEMPT
- ㊺ IS DUTY EXEMPT
- ㊻ IS DUTY EXEMPT
- ㊼ IS DUTY EXEMPT
- ㊽ IS DUTY EXEMPT
- ㊾ IS DUTY EXEMPT
- ㊿ IS DUTY EXEMPT



NOTE:
THIS PLAT CONTAINS TWO PAGES ON THE COMPANION PAGE.
THERE ARE IMPORTANT PLAT NOTES THAT AFFECT THE USE
OF THE PROPERTY.

LEGEND:
O = REAR & CAP (L.S. AS NOTED)
R = REAR & CAP IN ACCORDANCE WITH (L.S. 1884)
B = SET REAR & CAP IN ACCORDANCE WITH (L.S. 1884)
S = SET 5/8" REAR W/ 1 1/2" CAP, L.S. 1884
D = SET 5/8" REAR W/ 1 1/2" CAP, L.S. 1884
C = CENTERLINE (C.L.)
E = EXEMPT AS NOTED

RECEPTION 197315
1/27/07

CLIENT: PARKSIDE SUBDIVISION
FINAL PLAT

DESIGNER: MARSH, LLC
DRAWN BY: J. MARSH
DATE: 12/28/07
MONITORING: SUPERVISOR - PH. 248-2251
REVISIONS: 1. 12/28/07
2. 01/28/08